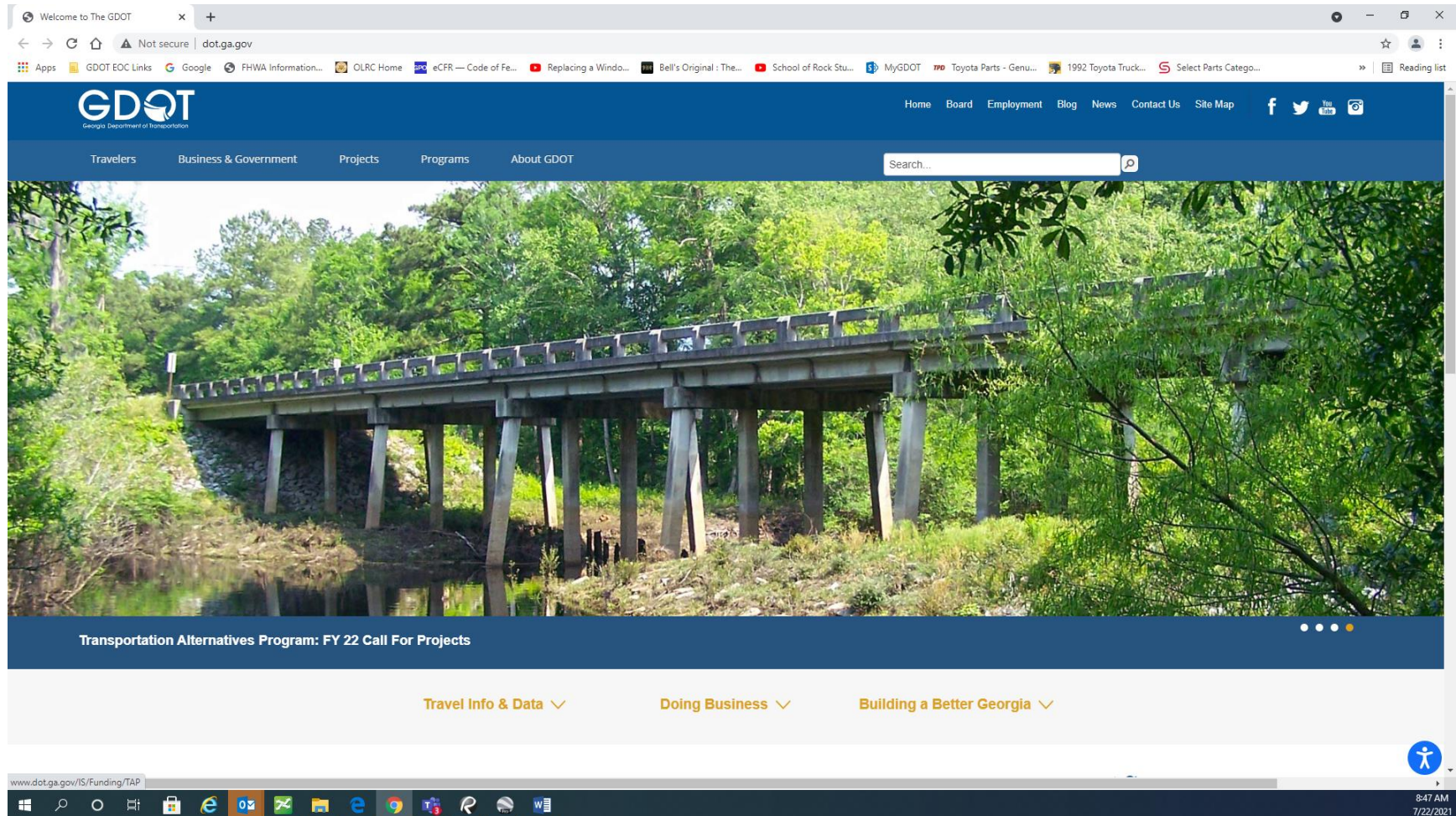


## How to find a Project's VE Study Report, VE Study Implementation Memo, VE Study Implementation Reversal Memo, and Stewardship & Oversight Plan – FHWA Georgia Division Project of Division Interest (PoDI) Plan through GDOT's Home Page Project Search function using the Project's PI Number

Navigate to - <http://www.dot.ga.gov/> to reach GDOT home page



Select Projects and

Project Info Project Search (GeoPI)

Welcome to The GDOT

dot.ga.gov

Apps GDOT EOC Links Google FHWA Information... OLRC Home eCFR — Code of Fe... Replacing a Windo... Bell's Original : The... School of Rock Stu... MyGDOT Toyota Parts - Genu... 1992 Toyota Truck... Select Parts Catego... Reading list

Home Board Employment Blog News Contact Us Site Map

Travelers Business & Government **Projects** Programs About GDOT

Search...

Plans Search

Project Info


Project Search (GeoPI)

Research Projects & Reports

Special Projects

Studies

Suggest A Quick Fix



Transportation Alternatives Program: FY 22 Call For Projects

Travel Info & Data

Doing Business

Building a Better Georgia

www.dot.ga.gov/BS/Projects/ProjectSearch

8:50 AM 7/22/2021

You are now in GeoPI - In search box near the top of the page enter the PI Number and Select **GO**

GeoPI GeoPI x +

dot.ga.gov/BS/Projects/ProjectSearch

Apps GDOT EOC Links Google FHWA Information... OLR Home eCFR — Code of Fe... Replacing a Windo... Bell's Original : The... School of Rock Stu... MyGDOT Toyota Parts - Genu... 1992 Toyota Truck... Select Parts Catego... Reading list

**GDOT**  
Georgia Department of Transportation

Home Board Employment News Contact Us Site Map f t y i

Search...

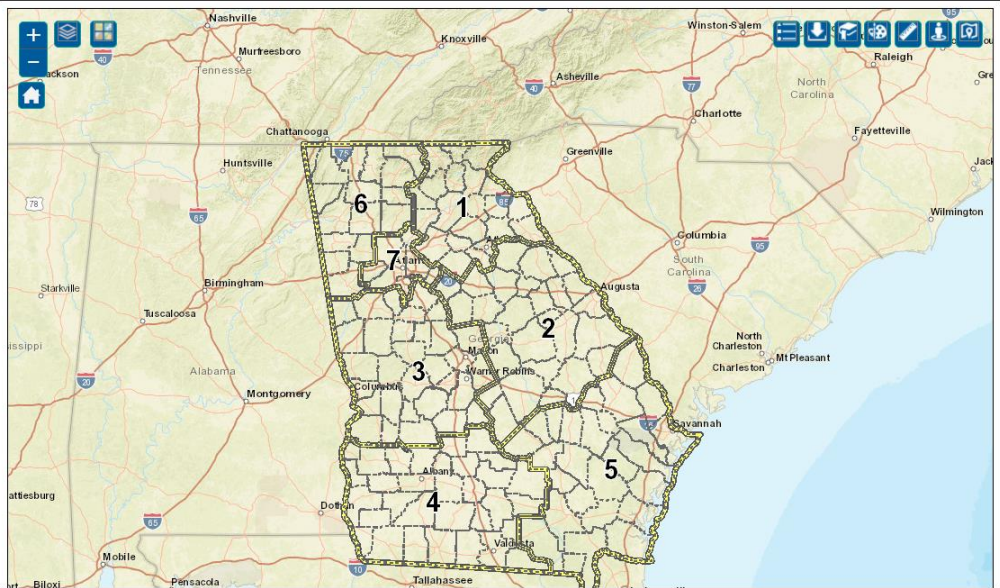
Home -> Projects -> Project Info -> Project Search (GeoPI)

ALL 0008430 GO

Related Documents

Map List

Projects Bridges Permits Safety Signals Traffic



The map displays the state of Georgia with major highways and cities labeled. Seven project locations are marked with numbered icons: 1 (Atlanta), 2 (Augusta), 3 (Columbus), 4 (Macon), 5 (Savannah), 6 (Chattanooga), and 7 (Birmingham). The map includes a legend, scale bar, and various navigation tools.

8:57 AM  
7/22/2021

Select **Related Documents** near the top center of the page

GeoPI GeoPI x +

Not secure | dot.ga.gov/BS/Projects/ProjectSearch

Apps GDOT EOC Links Google FHWA Information... OLR Home eCFR — Code of Fe... Replacing a Windo... Bell's Original : The... School of Rock Stu... MyGDOT 70 Toyota Parts - Genu... 1992 Toyota Truck... Select Parts Catego... » Reading list

**GDOT**  
Georgia Department of Transportation

Home Board Employment News Contact Us Site Map f t y i

Search...

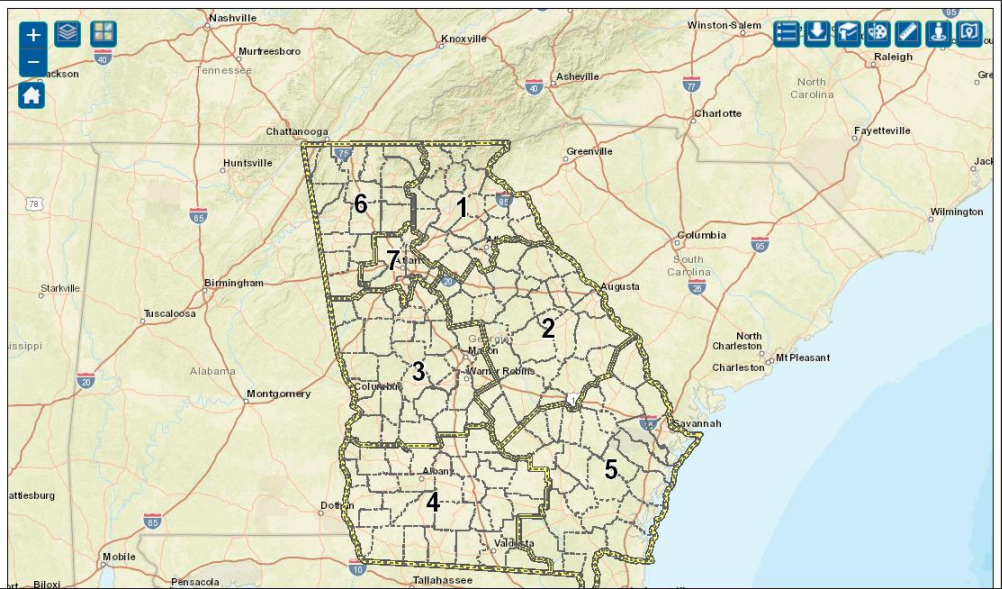
Home -> Projects -> Project Info -> Project Search (GeoPI)

ALL 0008430 GO

Projects Bridges Permits Safety Signals Traffic

**Related Documents**

Map List



8:57 AM  
7/22/2021

At the left side of the page use the Document Type list (including SHOW MORE expansion option) to find the document type you are looking for and select it.

GeoPI GeoPI x Search: 0008430\* x +

Not secure | dot.ga.gov/gdotsearch/Pages/Projects.aspx?K=0008430\*

Apps GDOT EOC Links Google FHWA Information... OLRG Home eCFR — Code of Fe... Replacing a Windo... Bell's Original : The... School of Rock Stu... MyGDOT Toyota Parts - Genu... 1992 Toyota Truck... Select Parts Catego... Reading list

Sign In

0008430 GO Share Results Download Items on this Page

Everything Projects Bridges Permits Safety Signals

Document Category About 1,937 results

Concept Development Stage (16)

Contract Document (21)

Design (5)

Design Plans (1,852)

Materials Certificate (3)

SHOW MORE

Document Type

Approved Concept Reports (4)

As Built Plans (18)

BFI (Bridge Foundation Investigation) (1)

Concept Reports (12)

Construction Plans (1,334)

SHOW MORE

Sheet Type

01 - Cover (4)

01-Cover Sheet (1)

02 - Index (3)

02-Index Sheet (2)

03 - Revision Summary Sheet (3)

SHOW MORE

Project ID

0008430

ProjectWise: 0000544\_0089.pdf  
Document Category: Design Plans  
Project ID: 0000544  
Document Type: Construction Plans  
County: Brooks

ProjectWise: 0006049\_60-0084\_FINAL\_02-07-2020.pdf  
Document Category: Design Plans  
Project ID: 0006049  
Document Type: Construction Plans  
County: Cobb;Paulding

ProjectWise: 0008430 PoDI S&O Plan.pdf  
Document Category: Design  
Project ID: 0008430  
Document Type: Stewardship and Oversight Plan  
County: Barrow

ProjectWise: 0008430\_CR\_MAR2012.pdf  
Document Category: Concept Development Stage  
Project ID: 0008430  
Document Type: Approved Concept Reports  
County: Barrow

ProjectWise: 0008430\_CR\_MAR2012\_Layout\_fullsize.pdf  
Document Category: Concept Development Stage  
Project ID: 0008430  
Document Type: Approved Concept Reports  
County: Barrow

ProjectWise: 0008430\_01-0001\_FINAL\_010820.pdf  
Document Category: Design Plans  
Project ID: 0008430  
Document Type: Construction Plans  
County: Barrow

ProjectWise: 0008430\_02-0001\_FINAL\_010820.pdf  
Document Category: Design Plans  
Project ID: 0008430  
Document Type: Construction Revision Plans  
County: Barrow

ProjectWise: 0008430\_02-0002\_FINAL\_010820.pdf  
Document Category: Design Plans  
Project ID: 0008430  
Document Type: Construction Revision Plans  
County: Barrow

8:59 AM 7/22/2021

In this example see the Stewardship and Oversight Plan selection (this is Document Type for PoDI plans) with the (1) indicating there is one related document.

The screenshot displays a web application interface for document search. The browser address bar shows the URL `dot.ga.gov/gdotsearch/Pages/Projects.aspx?K=0008430*`. The search results are organized into three columns: Document Type, Document Category, and Document Type (repeated). The 'Stewardship and Oversight Plan (1)' entry is highlighted with a red circle.

Document Type	Document Category	Document Type
Approved Concept Reports (4)	ProjectWise: 0008430 PoDI S&O Plan.pdf Document Category: Design Project ID: 0008430	Document Type: Stewardship and Oversight Plan County: Barrow
As Built Plans (18)	ProjectWise: 0008430_CR_MAR2012.pdf Document Category: Concept Development Stage Project ID: 0008430	Document Type: Approved Concept Reports County: Barrow
BFI (Bridge Foundation Investigation) (1)	ProjectWise: 0008430_CR_MAR2012_Layout_fullsize.pdf Document Category: Concept Development Stage Project ID: 0008430	Document Type: Approved Concept Reports County: Barrow
Concept Reports (12)	ProjectWise: 0008430_01-0001_FINAL_010820.pdf Document Category: Design Plans Project ID: 0008430	Document Type: Construction Plans County: Barrow
Construction Plans (1,334)	ProjectWise: 0008430_02-0001_FINAL_010820.pdf Document Category: Design Plans Project ID: 0008430	Document Type: Construction Revision Plans County: Barrow
Construction Revision Plans (483)	ProjectWise: 0008430_02-0002_FINAL_010820.pdf Document Category: Design Plans Project ID: 0008430	Document Type: Construction Revision Plans County: Barrow
Contract (3)	ProjectWise: 0008430_03-0001_FINAL_010820.pdf Document Category: Design Plans Project ID: 0008430	Document Type: Construction Revision Plans County: Barrow
Correspondence (30)	ProjectWise: 0008430_04-0001_FINAL_010820.pdf Document Category: Design Plans Project ID: 0008430	Document Type: Construction Revision Plans County: Barrow
Final Acceptance (2)	ProjectWise: 0008430_04-0002_FINAL_010820.pdf Document Category: Design Plans Project ID: 0008430	Document Type: Construction Revision Plans County: Barrow
Final Field Plan Review Report (1)	ProjectWise: 0008430_04-0003_FINAL_010820.pdf Document Category: Design Plans Project ID: 0008430	Document Type: Construction Revision Plans County: Barrow
Materials Certificat (2)	ProjectWise: 0008430_04-0004_FINAL_010820.pdf Document Category: Design Plans Project ID: 0008430	Document Type: Construction Revision Plans County: Barrow
Materials Certificate (1)	ProjectWise: 0008430_04-0005_FINAL_010820.pdf Document Category: Design Plans Project ID: 0008430	Document Type: Construction Revision Plans County: Barrow
Miscellaneous (18)	ProjectWise: 0008430_04-0006_FINAL_010820.pdf Document Category: Design Plans Project ID: 0008430	Document Type: Construction Revision Plans County: Barrow
NOI (Notice of Intent) (1)	ProjectWise: 0008430_04-0007_FINAL_010820.pdf Document Category: Design Plans Project ID: 0008430	Document Type: Construction Revision Plans County: Barrow
NTP (Notice to Proce (2)	ProjectWise: 0008430_04-0008_FINAL_010820.pdf Document Category: Design Plans Project ID: 0008430	Document Type: Construction Revision Plans County: Barrow
NTP (Notice to Proceed) (1)	ProjectWise: 0008430_04-0009_FINAL_010820.pdf Document Category: Design Plans Project ID: 0008430	Document Type: Construction Revision Plans County: Barrow
Plans Image (1)	ProjectWise: 0008430_04-0010_FINAL_010820.pdf Document Category: Design Plans Project ID: 0008430	Document Type: Construction Revision Plans County: Barrow
Preliminary Field Plan Review Report (2)	ProjectWise: 0008430_04-0011_FINAL_010820.pdf Document Category: Design Plans Project ID: 0008430	Document Type: Construction Revision Plans County: Barrow
Right of Way Plans (6)	ProjectWise: 0008430_04-0012_FINAL_010820.pdf Document Category: Design Plans Project ID: 0008430	Document Type: Construction Revision Plans County: Barrow
Stewardship and Oversight Plan (1)	ProjectWise: 0008430_04-0013_FINAL_010820.pdf Document Category: Design Plans Project ID: 0008430	Document Type: Construction Revision Plans County: Barrow
Touchdown Guide to Stewardship and Oversight Plan	ProjectWise: 0008430_04-0014_FINAL_010820.pdf Document Category: Design Plans Project ID: 0008430	Document Type: Construction Revision Plans County: Barrow
Sheet Type	ProjectWise: 0008430_04-0015_FINAL_010820.pdf Document Category: Design Plans Project ID: 0008430	Document Type: Construction Revision Plans County: Barrow

You can now select the link to the individual documents available under the Document Type selected.

[illegible]

The same process is used to access VE Study documents with the example shown below for PI 0013238 showing the Document Types which can be selected for VE Study Final Report and VE Study Implementation Letter.

The screenshot shows a web browser window with the URL [dot.ga.gov/gdotsearch/Pages/Projects.aspx?K=0013238](https://dot.ga.gov/gdotsearch/Pages/Projects.aspx?K=0013238). The search results for project 0013238 are displayed, showing various document categories and types. A red cloud highlights the 'VE Study Final Report' and 'VE Study Implementation Letter' categories.

**Document Category**

- Concept Development Stage (1)
  - ☐ [General Projects: 00120195.PDF](#)  
**Document Category:** Contract Document  
**Project ID:** 110780-  
**Document Type:** Voucher Summary  
**Project Number:** IM000-00MS-00(325)  
[Report a problem](#)
- Contract Document (4)
- Design (3)
- Design Plans (121)
- Project Document (8)
  - ☐ [ProjectWise: 0013238 Bartow County; Implementation of VE Study Alternatives - Approved by Chief Engineer 051920.pdf](#)  
**Document Category:** Design  
**Project ID:** 0013238  
**Document Type:** VE Study Implementation Letter  
**County:** Bartow

**Document Type**

- Approved Concept Reports (1)
  - ☐ [ProjectWise: 0013238 PoDI S&O Plan.pdf](#)  
**Document Category:** Design  
**Project ID:** 0013238  
**Document Type:** Stewardship and Oversight Plan  
**County:** Bartow
- As Built Plans (56)
- Construction Plans (57)
- Construction Revision Plans (3)
- Correspondence (6)
- Miscellaneous (3)
- NTP (Notice to Proceed) (1)
- Right of Way Plans (5)
- Stewardship and Oversight Plans (1)
  - ☐ [General Projects: 05890036.PDF](#)  
**Document Category:** Project Document  
**Project ID:** 621720-  
**Document Type:** Correspondence  
**Project Number:** STP00-0186-01(025)  
[Report a problem](#)
- VE Study Final Report (1)
- VE Study Implementation Letter (1)
- Voucher Summary (2)
  - ☐ [General Projects: 05890038.PDF](#)  
**Document Category:** Project Document  
**Project ID:** 621720-  
**Document Type:** Correspondence  
**Project Number:** STP00-0186-01(025)  
[Report a problem](#)

**Sheet Type**

- 01 - Cover (3)
- 02 - Index (1)
  - ☐ [General Projects: 05890040.PDF](#)  
**Document Category:** Project Document  
**Project ID:** 621720-  
**Document Type:** Correspondence  
**Project Number:** STP00-0186-01(025)  
[Report a problem](#)